

235 ACRES DIRECT ACCESS TO GULF OF MEXICO

PERRY, FL- TAYLOR COUNTY

2.3 Miles from the Gulf of Mexico

\$763,770.00

Sales Price has been Repositioned
as Seller is Motivated



SELLER FINANCING AVAILABLE WITH 30% DOWN!

LAND MAY ALSO BE LEASED-CALL AGENT FOR DETAILS

235 Acres in Perry Florida- Taylor County! Only Minutes from the Open Water...You can Smell the Saltwater from these Fantastic parcels of Land Located in Northern Florida just 55 miles from Tallahassee- the State's Capitol. Subject also boasts Creek Frontage that leads out to the Gulf of Mexico! This Property would make the Perfect Spot for a Second Home or Ideal for development of a Vacation Get-a-Way Site. As Owner, You'll Retain Partial Mineral Rights and Own 1/2 of Spring Warrior Creek that borders the South End of the Property. The Possibilities are Endless. Surrounding Properties are listed at a much higher Price... this is a Steal Deal for anyone looking to Purchase Real Florida Living Land in the Heart of Florida Country... Taylor County. Call Today for Further Details and Directions to get to this Property.

Listing Agent: Tina Marie Eloian, CCIM

Tina@FloridaCommercialGroup.com

Sales | Investments | Leasing | Property Management

401 E. Palm Avenue, Tampa, FL 33602

P. 813.935.9600 | F. 813.930.0946

www.FLORIDACOMMERCIALGROUP.com



This information is from sources deemed to be reliable. We are not responsible for misstatements of facts, errors or omissions, prior sale, change of price and/or terms or withdrawal from the market without notice. Buyer shall verify all information with their own representatives as well as state and local agencies.

235 ACRES DIRECT ACCESS TO GULF OF MEXICO

PERRY, FL- TAYLOR COUNTY

2.3 Miles from the Gulf of Mexico

\$763,770.00

Deer



Turkey



Onsite Creek



Country Living (Second Home or Vacation Location) :: Hunting :: Fishing :: Abundant Wildlife :: Direct Access to the Keaton Beach

Perry, Florida is situated in the heart of Taylor County. It is bordered by beautiful coast lines, rivers, Natural Oak and Pine woodlands & Wild Life Preserves. From Redfish to Bream; you can Enjoy a bounty of endless in-shore, deep water off- shore and freshwater fishing in Taylor County. You can also enjoy acres of wooded area for hunting, exploration, recreation or just relaxing in nature. This property is situated approx. 20 miles south of the Central Business District of Taylor County. There is also a creek water line that runs through the property and out to the Gulf of Mexico. Taylor County is also home to Perry-Foley Airport, Aucilla Wildlife Management Area, Snipe Island Wildlife Management Area, Hickory Mound Wildlife Management Area, Forest Capital State Museum, Econfina River State Park and the Suwannee River Water Management District. The Florida Forest Festival; which is held in October can also be found in Perry as well. Although most people prefer taking the 35 Minute Commute to the Capitol in Tallahassee for day shopping or an evening out, many still venture to Gainesville which is only 1 hour and 20 minutes away for entertainment, recreation, shopping and dining. If you've been searching for the perfect investment property, this undiscovered piece of "Old Florida" offers the space and privacy you've been dreaming about.

Call Today for [Finance Terms and Details.](#)

Listing Agent: Tina Marie Eloian, CCIM

Tina@FloridaCommercialGroup.com

Sales | Investments | Leasing | Property Management

401 E. Palm Avenue, Tampa, FL 33602

P. 813.935.9600 | F. 813.930.0946

www.FLORIDACOMMERCIALGROUP.com



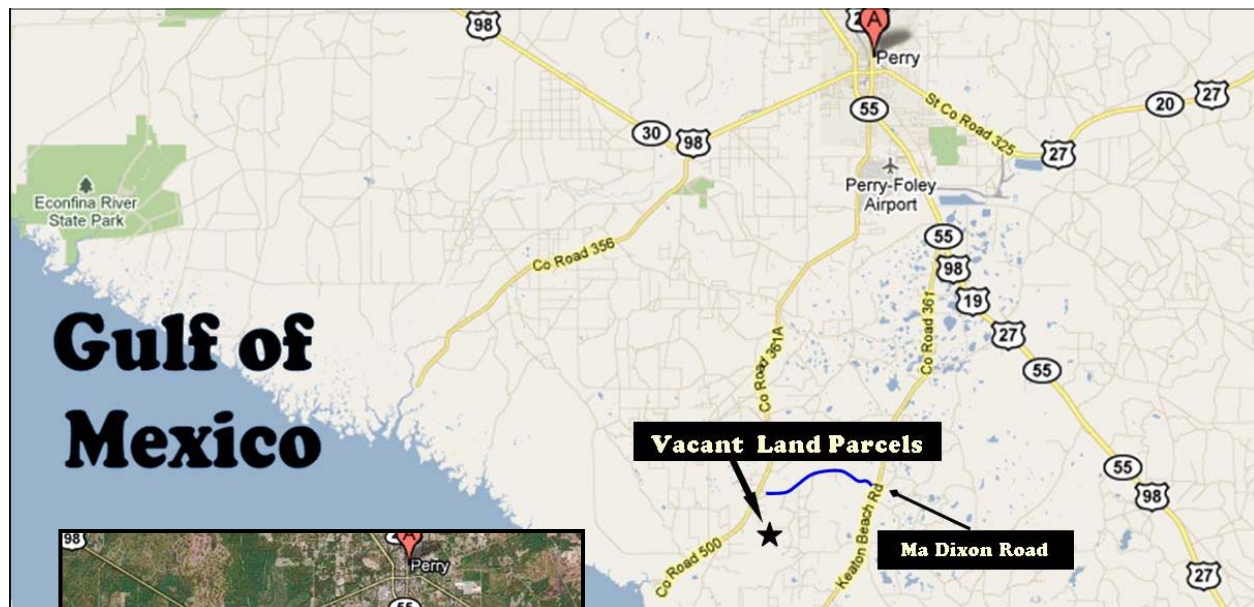
This information is from sources deemed to be reliable. We are not responsible for misstatements of facts, errors or omissions, prior sale, change of price and/or terms or withdrawal from the market without notice. Buyer shall verify all information with their own representatives as well as state and local agencies.

235 ACRES DIRECT ACCESS TO GULF OF MEXICO

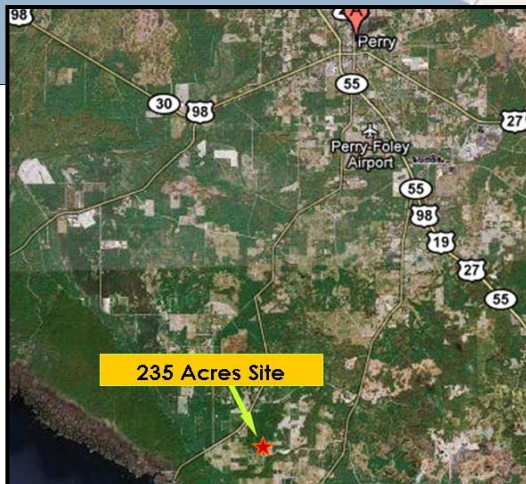
PERRY, FL- TAYLOR COUNTY

2.3 Miles from the Gulf of Mexico

\$763,770.00



Gulf of Mexico



Ma Dixon Road Connects to Keaton Beach which heads South to the Public Docks– with cut Canal Easy in/ Out for all Boats

Seller Financing Available with 30 % Down!

**235 Acres
in the Heart of Taylor County!
Own a Piece of Florida Today!**

Listing Agent: Tina Marie Eloian, CCIM

Tina@FloridaCommercialGroup.com

Sales | Investments | Leasing | Property Management

401 E. Palm Avenue, Tampa, FL 33602

P. 813.935.9600 | F. 813.930.0946

www.FLORIDACOMMERCIALGROUP.com



This information is from sources deemed to be reliable. We are not responsible for misstatements of facts, errors or omissions, prior sale, change of price and/or terms or withdrawal from the market without notice. Buyer shall verify all information with their own representatives as well as state and local agencies.